

Andhra Pradesh State Council of Higher Education

Notations :

- 1.Options shown in green color and with ✓ icon are correct.
- 2.Options shown in red color and with ✗ icon are incorrect.

Question Paper Name :	Pharmacy 28th April 2026 Shift 1
Subject Name :	Pharmacy
Creation Date :	2026-04-28 14:48:27
Duration :	120
Total Marks :	120
Display Marks:	No
Change Font Color :	No
Change Background Color :	No
Change Theme :	No
Help Button :	No
Show Reports :	No
Show Progress Bar :	No

Pharmacy

Group Number :	1
Group Id :	75207663
Group Maximum Duration :	0
Group Minimum Duration :	120
Show Attended Group? :	No
Edit Attended Group? :	No
Break time :	0
Group Marks :	120

Pharmacy

Section Id :	75207663
Section Number :	1
Section type :	Online
Mandatory or Optional :	Mandatory
Number of Questions :	120

Number of Questions to be attempted :	120
Section Marks :	120
Section Negative Marks :	0
Maximum Instruction Time :	0
Sub-Section Number :	1
Sub-Section Id :	75207663
Question Shuffling Allowed :	Yes

Question Number : 1 Question Id : 7520767441 Question Type : MCQ

Correct Marks : 1 Wrong Marks : 0

Which of the following pathways is used in the biosynthesis of carotenoids?

Options :

1. ✘ Acetate-mevalonate pathway
2. ✔ Isoprenoid pathway
3. ✘ Phenylpropanoid pathway
4. ✘ Shikimic acid pathway

Question Number : 2 Question Id : 7520767442 Question Type : MCQ

Correct Marks : 1 Wrong Marks : 0

Pyrethrum is a natural insecticide derived from _____.

Options :

1. ✘ *Azadirachta indica*
2. ✔ *Chrysanthemum cinerariifolium*
3. ✘ *Citronella silvatica*
4. ✘ *Nepeta cataria*

Question Number : 3 Question Id : 7520767443 Question Type : MCQ

Correct Marks : 1 Wrong Marks : 0

Lycopodium spore method of analysis is used for determining _____ of herbal drugs.

Options :

1. ✘ moisture content
2. ✘ ash content
3. ✔ purity
4. ✘ etabolites

Question Number : 4 Question Id : 7520767444 Question Type : MCQ

Correct Marks : 1 Wrong Marks : 0

All are specific identification tests for glycosides except ____ test.

Options :

1. ✘ Baljet
2. ✘ Borntrager's
3. ✔ Hager's test
4. ✘ Legal

Question Number : 5 Question Id : 7520767445 Question Type : MCQ

Correct Marks : 1 Wrong Marks : 0

Stas-Otto method is used for extraction of _____.

Options :

1. ✘ steroids
2. ✔ alkaloids

3. ✘ carbohydrates

4. ✘ flavonoids

Question Number : 6 Question Id : 7520767446 Question Type : MCQ

Correct Marks : 1 Wrong Marks : 0

The most useful evaluation parameter for detecting adulteration in powdered leaf drugs is _____.

Options :

1. ✘ ash value

2. ✘ inorganic impurities

3. ✔ microscopic evaluation

4. ✘ organoleptic evaluation

Question Number : 7 Question Id : 7520767447 Question Type : MCQ

Correct Marks : 1 Wrong Marks : 0

Papaverine is a _____ alkaloid.

Options :

1. ✔ isoquinoline

2. ✘ tropane

3. ✘ pseudo

4. ✘ purine

Question Number : 8 Question Id : 7520767448 Question Type : MCQ

Correct Marks : 1 Wrong Marks : 0

Which of the following adulterants are added in powdered capsicum for increasing bulk?

Options :

1. ✘ Dextrin
2. ✔ Red sanders wood
3. ✘ Powdered olive stones
4. ✘ Starch

Question Number : 9 Question Id : 7520767449 Question Type : MCQ

Correct Marks : 1 Wrong Marks : 0

A manufacturer wishes to cultivate aromatic plants for isolating volatile oils. Which factor that most significantly influences the biosynthesis of volatile oils should be controlled?

Options :

1. ✔ Altitude and temperature
2. ✘ Irrigation schedule
3. ✘ Plant spacing
4. ✘ Soil moisture

Question Number : 10 Question Id : 7520767450 Question Type : MCQ

Correct Marks : 1 Wrong Marks : 0

Choose the correct combination.

Options :

1. ✘ Arachis oli – rich in MUFA/PUFA, hypoallergenic
2. ✘ Croton oil – alcohol insoluble, purgative
3. ✔ Chaulmoogra oil – anti-psoriatic, *Hydnocarpus* genus
4. ✘ Sunflower Oil – Source of vitamin A, lowers LDL

Question Number : 11 Question Id : 7520767451 Question Type : MCQ

Correct Marks : 1 Wrong Marks : 0

Which herbal drug enzymes are used for aiding digestion?

Options :

1. ✘ Rauwolfia
2. ✔ Papaya
3. ✘ Cinchona
4. ✘ Cinnamon

Question Number : 12 Question Id : 7520767452 Question Type : MCQ

Correct Marks : 1 Wrong Marks : 0

Which test is used to determine the purity of honey?

Options :

1. ✘ Barfoed's test
2. ✔ Fiehe's test
3. ✘ Kedde test

4. ✘ Salkowski's test

Question Number : 13 Question Id : 7520767453 Question Type : MCQ
Correct Marks : 1 Wrong Marks : 0

Which test is used to detect anthraquinone glycosides, and produce a pink colour in ammoniacal layer?

Options :

1. ✘ Salkowski test

2. ✘ Hagar test

3. ✘ Legal test

4. ✔ Modified Borntrager's test

Question Number : 14 Question Id : 7520767454 Question Type : MCQ
Correct Marks : 1 Wrong Marks : 0

Choose the correct option to justify the requirement: "Absorbent Cotton Wool IP (Indian Pharmacopoeia) should exhibit rapid sinking time:

Options :

1. ✘ Within 3–6 seconds.

2. ✔ Within 7–10 seconds.

3. ✘ Within 11–15 seconds.

4. ✘ Within 15–20 seconds.

Question Number : 15 Question Id : 7520767455 Question Type : MCQ

Correct Marks : 1 Wrong Marks : 0

Protein fibroin is a chemical constituent of _____ fibre.

Options :

1. ✘ cotton
2. ✘ wool
3. ✔ silk
4. ✘ Nylon

Question Number : 16 Question Id : 7520767456 Question Type : MCQ

Correct Marks : 1 Wrong Marks : 0

Which of the following is NOT an anthranilic acid derivative?

Options :

1. ✘ Betrixaban
2. ✘ Furosemide
3. ✘ Mefenamic acid
4. ✔ Naproxen

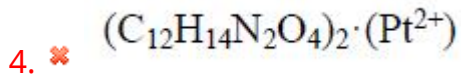
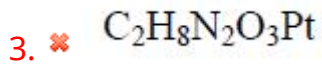
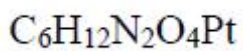
Question Number : 17 Question Id : 7520767457 Question Type : MCQ

Correct Marks : 1 Wrong Marks : 0

Which of the following is the molecular formula of cisplatin?

Options :

1. ✔ $C_{12}H_6N_2Pt$
2. ✘



Question Number : 18 Question Id : 7520767458 Question Type : MCQ

Correct Marks : 1 Wrong Marks : 0

Which of the following statement is INCORRECT about antianginal organic nitrates?

Options :

1. ✘ Ester prodrugs of nitric acid and polyols

2. ✘ Release nitric oxide to show therapeutic effect

3. ✔ Alkyl Nitrates with hydrocarbon chains

4. ✘ Lipophilic compounds and rapidly absorbed through bio-membranes

Question Number : 19 Question Id : 7520767459 Question Type : MCQ

Correct Marks : 1 Wrong Marks : 0

4-(2-Aminoethyl)benzene-1,2-diol is commonly known as _____.

Options :

1. ✘ catechol

2. ✔ dopamine

3. ✘ hydroquinone

4. ✘ resorcinol

Question Number : 20 Question Id : 7520767460 Question Type : MCQ

Correct Marks : 1 Wrong Marks : 0

The anti-cancer drug which acts through aziridine-mediated DNA-alkylation is

_____.

Options :

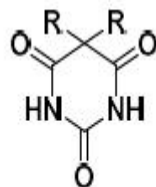
1. ✘ cytarabine
2. ✘ cisplatin
3. ✔ cyclophosphamide
4. ✘ bleomycin

Question Number : 21 Question Id : 7520767461 Question Type : MCQ

Correct Marks : 1 Wrong Marks : 0

The following pharmacophore is required for the sedative-hypnotic activity of

_____ drug.



Options :

1. ✘ zolpidem
2. ✘ estazolam
3. ✘ quazepam
4. ✔ Pentobarbital

Question Number : 22 Question Id : 7520767462 Question Type : MCQ

Correct Marks : 1 Wrong Marks : 0

Which anti-malarial agent is an 8-aminoquinoline derivative?

Options :

1. ✘ Chloroquine
2. ✔ Primaquine
3. ✘ Mefloquine
4. ✘ Halofantrine

Question Number : 23 Question Id : 7520767463 Question Type : MCQ

Correct Marks : 1 Wrong Marks : 0

Albuterol basically differs from sympathomimetic in that the hydroxyl group at C-3 of the aromatic ring is replaced with _____ group.

Options :

1. ✔ hydroxymethyl
2. ✘ hydroxyethyl
3. ✘ hydroxypropyl
4. ✘ hydroxybutyl

Question Number : 24 Question Id : 7520767464 Question Type : MCQ

Correct Marks : 1 Wrong Marks : 0

Activity of cardiac glycoside depends to a great extent on _____.

Options :

1. ✘ 23rd carbonyl oxygen
2. ✘ C-3 OH
3. ✘ side chain at C-14
4. ✔ side chain at C-17

Question Number : 25 Question Id : 7520767465 Question Type : MCQ
Correct Marks : 1 Wrong Marks : 0

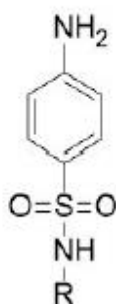
Tricyclic antidepressants have how many rings in core structure?

Options :

1. ✘ 2
2. ✔ 3
3. ✘ 4
4. ✘ 5

Question Number : 26 Question Id : 7520767466 Question Type : MCQ
Correct Marks : 1 Wrong Marks : 0

Which of the functional group in the given drug is responsible for photosensitivity?



Options :

1. ✓ NH_2
2. ✗ SO_2
3. ✗ NH
4. ✗ S

Question Number : 27 Question Id : 7520767467 Question Type : MCQ

Correct Marks : 1 Wrong Marks : 0

Which of the following is not a primary factor that affects the rate of an SN_1 Reaction?

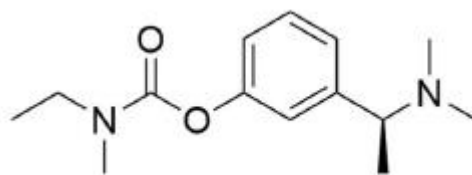
Options :

1. ✗ Concentration of the nucleophile
2. ✓ Nature of the leaving group
3. ✗ Stability of the carbocation
4. ✗ Steric hindrance

Question Number : 28 Question Id : 7520767468 Question Type : MCQ

Correct Marks : 1 Wrong Marks : 0

Given structure is _____.



Options :

1. ✗ edrophonium

2. ✓ rivastigmine

3. ✘ neostigmine

4. ✘ tabun

Question Number : 29 Question Id : 7520767469 Question Type : MCQ

Correct Marks : 1 Wrong Marks : 0

Another name of diphenhydramine is :

Options :

1. ✓ Benzhydramine

2. ✘ Dimenhydrinate

3. ✘ Mecloprodin

4. ✘ Neohetramine

Question Number : 30 Question Id : 7520767470 Question Type : MCQ

Correct Marks : 1 Wrong Marks : 0

Due to the presence of a _____, charged _____ group, acetylcholine does not penetrate lipid membranes.

Options :

1. ✘ highly polar, acetyl

2. ✘ weakly polar, acetyl

3. ✘ weakly polar, ammonium

4. ✓ highly polar, ammonium

Question Number : 31 Question Id : 7520767471 Question Type : MCQ
Correct Marks : 1 Wrong Marks : 0

Which of the following does not specifically target VEGF receptors?

Options :

1. ✗ Bevacizumab
2. ✗ Everolimus
3. ✗ Linalidomide
4. ✓ Neupilin

Question Number : 32 Question Id : 7520767472 Question Type : MCQ
Correct Marks : 1 Wrong Marks : 0

Which of the following anticoagulant is a sulfated polysachharide?

Options :

1. ✓ Heparin
2. ✗ Warfarin
3. ✗ phenindione
4. ✗ Dicoumarol

Question Number : 33 Question Id : 7520767473 Question Type : MCQ
Correct Marks : 1 Wrong Marks : 0

Which of the following statement is NOT CORRECT?

Options :

1. ✘ Fluoroquinolones absorption is reduced with polyvalent metal ions
2. ✘ Sulfamethaxazole is a competitive inhibitor of enzyme dihydropteroate synthase
3. ✘ 1,3-Diaminoinositol is the pharmacophore moiety in aminoglycosides
4. ✔ Macrocyclic lactone ring is present in tetracycline antibacterials

Question Number : 34 Question Id : 7520767474 Question Type : MCQ

Correct Marks : 1 Wrong Marks : 0

All statements are true for natural estrogens except:

Options :

1. ✘ Contain aromatic A-ring
2. ✘ Contain C-18 steroid nucleus
3. ✔ Have hydroxyl groups at the C-5 and/or C-18 positions
4. ✘ Are synthesized from cholesterol through steroidogenesis.

Question Number : 35 Question Id : 7520767475 Question Type : MCQ

Correct Marks : 1 Wrong Marks : 0

The basic structural moiety of buspirone is _____.

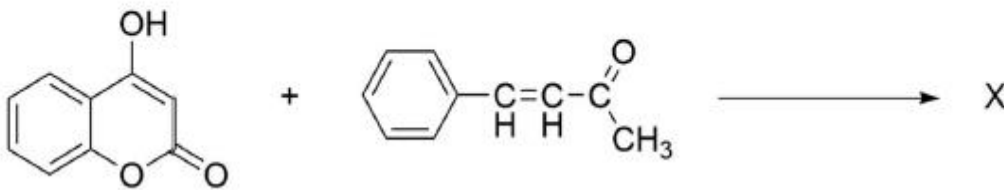
Options :

1. ✔ azaspirodecanedione

- 2. ✘ benzodiazepine
- 3. ✘ dibenzoxepin
- 4. ✘ Indole

Question Number : 36 Question Id : 7520767476 Question Type : MCQ
 Correct Marks : 1 Wrong Marks : 0

In the given reaction, x will be _____.



Options :

- 1. ✔ warfarin
- 2. ✘ menadione
- 3. ✘ acetomenadione
- 4. ✘ clopidogrel

Question Number : 37 Question Id : 7520767477 Question Type : MCQ
 Correct Marks : 1 Wrong Marks : 0

A compound mainly containing a benzothiadiazine ring is most likely to have _____ activity.

Options :

- 1. ✘ antipsychotic
- 2. ✘ anti-histaminic

3. ✓ diuretic

4. ✗ muscle relaxant

Question Number : 38 Question Id : 7520767478 Question Type : MCQ

Correct Marks : 1 Wrong Marks : 0

Identify the most commonly used reaction to convert aldehydes and ketones to alkenes

Options :

1. ✗ Reimer–Tiemann reaction

2. ✓ Wittig reaction

3. ✗ Wolff reaction

4. ✗ Wolff-Kishner reaction

Question Number : 39 Question Id : 7520767479 Question Type : MCQ

Correct Marks : 1 Wrong Marks : 0

Silver nitrate is used in the limit test of _____.

Options :

1. ✗ lead

2. ✗ sulphate

3. ✓ chloride

4. ✗ iron

Question Number : 40 Question Id : 7520767480 Question Type : MCQ

Correct Marks : 1 Wrong Marks : 0

Which of the following is the limit for metals in drugs, expressed in terms of ppm of lead as per the Indian Pharmacopoeia (IP)?

Options :

1. ✘ 10 ppm
2. ✔ 20 ppm
3. ✘ 50 ppm
4. ✘ 100 ppm

Question Number : 41 Question Id : 7520767481 Question Type : MCQ

Correct Marks : 1 Wrong Marks : 0

What is the working principle of Hoesppler viscometer?

Options :

1. ✘ Flow rate of fluid is inversely proportional to its viscosity
2. ✘ Rise of liquid in Capillary correlates with its viscosity
3. ✔ Time of Fall of a ball in a fluid filled tube correlates with viscosity
4. ✘ Torque required to shear a cone against the fluid lined plate correlates with viscosity

Question Number : 42 Question Id : 7520767482 Question Type : MCQ

Correct Marks : 1 Wrong Marks : 0

Which process causes phase inversion in emulsions?

Options :

1. ✘ Increase in emulsifier concentration
2. ✔ Change in phase volume ratio
3. ✘ Increased droplet size
4. ✘ Increased viscosity

Question Number : 43 Question Id : 7520767483 Question Type : MCQ
Correct Marks : 1 Wrong Marks : 0

Which form of a drug has greatest solubility?

Options :

1. ✘ Anhydrous
2. ✔ Amorphous
3. ✘ Crystalline
4. ✘ Monohydrate

Question Number : 44 Question Id : 7520767484 Question Type : MCQ
Correct Marks : 1 Wrong Marks : 0

Which of the following equations defines the surface excess?

Options :

1. ✘ BET equation
2. ✔ Gibbs equation
3. ✘ Langmuir equation

4. ✘ Young-Laplace equation

Question Number : 45 Question Id : 7520767485 Question Type : MCQ

Correct Marks : 1 Wrong Marks : 0

What is the usual range of aggregation number of surfactant molecules to form spherical micelles?

Options :

1. ✘ 25 to 50
2. ✔ 50 to 100
3. ✘ 100 to 200
4. ✘ 200 to 500

Question Number : 46 Question Id : 7520767486 Question Type : MCQ

Correct Marks : 1 Wrong Marks : 0

Which of the following solvent is most suitable to determine partition coefficient of drug?

Options :

1. ✘ n-Hexane
2. ✘ Chloroform
3. ✘ Amyl acetate
4. ✔ n-Octanol

Question Number : 47 Question Id : 7520767487 Question Type : MCQ

Correct Marks : 1 Wrong Marks : 0

Which of the following is not a plasticizer?

Options :

1. ✘ Diocetyl phthalate
2. ✔ Glucaric acid
3. ✘ Triacetin
4. ✘ Triethyl citrate

Question Number : 48 Question Id : 7520767488 Question Type : MCQ

Correct Marks : 1 Wrong Marks : 0

The time required for the complete degradation of a drug in solution is a finite value. The order of that reaction is:

Options :

1. ✔ Zero
2. ✘ Pseudo First
3. ✘ Second
4. ✘ First

Question Number : 49 Question Id : 7520767489 Question Type : MCQ

Correct Marks : 1 Wrong Marks : 0

Which material answers the description of being “a clay formed from volcanic ash, primarily composed of montmorillonite?

Options :

1. ✔ Bentonite

2. ✘ Diatomaceous earth
3. ✘ Kaolin
4. ✘ Veegum

Question Number : 50 Question Id : 7520767490 Question Type : MCQ

Correct Marks : 1 Wrong Marks : 0

A researcher wishes to formulate a transdermal patch for which a bio adhesive polymer is required. Which of the following is NOT suitable?

Options :

1. ✘ Hydroxyethyl cellulose
2. ✘ Polycarbophil
3. ✔ Polyvinylpyrrolidone
4. ✘ Polyvinylalcohol

Question Number : 51 Question Id : 7520767491 Question Type : MCQ

Correct Marks : 1 Wrong Marks : 0

A manufacturer wishes to formulate a cough syrup complying to Indian Pharmacopeial standards. What should be the concentration of sugar in the syrup?

Options :

1. ✘ 66.7% w/v
2. ✔ 66.7% w/w

3. ✘ 85% w/v

4. ✘ 85% w/w

Question Number : 52 Question Id : 7520767492 Question Type : MCQ
Correct Marks : 1 Wrong Marks : 0

In which of the following USP dissolution apparatus reciprocating motion is used?

Options :

1. ✔ Apparatus III

2. ✘ Apparatus IV

3. ✘ Apparatus V

4. ✘ Apparatus VI

Question Number : 53 Question Id : 7520767493 Question Type : MCQ
Correct Marks : 1 Wrong Marks : 0

The component of pharmaceutical aerosols which ensures that the product is delivered in proper and desired form is called

Options :

1. ✘ Propellant

2. ✘ Valve

3. ✔ Actuator

4. ✘ DipTube

Question Number : 54 Question Id : 7520767494 Question Type : MCQ

Correct Marks : 1 Wrong Marks : 0

Select the correct combination of tablet defect and one of its formulation related causes

Options :

1. ✘ Capping – too much binder
2. ✘ Lamination - granules with low content of fines
3. ✘ Picking - too much lubricant
4. ✔ Sticking – improper drying of granules before compression

Question Number : 55 Question Id : 7520767495 Question Type : MCQ

Correct Marks : 1 Wrong Marks : 0

According to the FDA, the guidelines for stability testing are outlined in:

Options :

1. ✘ 1 CFR § 11.16
2. ✘ 11 CFR § 21.61
3. ✔ 21 CFR § 211.166
4. ✘ 31 CFR § 321.196

Question Number : 56 Question Id : 7520767496 Question Type : MCQ

Correct Marks : 1 Wrong Marks : 0

In parenterals, Water attack test is used for which type of glass?

Options :

1. ✘ Type I
2. ✔ Type II
3. ✘ Type III
4. ✘ Non Parentral

Question Number : 57 Question Id : 7520767497 Question Type : MCQ

Correct Marks : 1 Wrong Marks : 0

Progesterone injection BP is a sterile solution of progesterone in a suitable vegetable oil. Which oil is used in its formulation?

Options :

1. ✘ Cottonseed oil
2. ✔ Ethyl oleate
3. ✘ Fractionated coconut oil
4. ✘ Soyabean oil

Question Number : 58 Question Id : 7520767498 Question Type : MCQ

Correct Marks : 1 Wrong Marks : 0

Which of the following combination of properties in a drug makes it suitable for once a day sustained release tablet?

Options :

1. ✘ Absorbed from the stomach, plasma half-life is 8 hours

2. ✓ Administered thrice a day, plasma half-life is 6 hours
3. ✗ Dose – 400 mg, administered thrice a day
4. ✗ Dose 500 mg, shows extensive first pass metabolism

Question Number : 59 Question Id : 7520767499 Question Type : MCQ
Correct Marks : 1 Wrong Marks : 0

Which of the following statements are correct :

1. Zein is an alcohol soluble protein derivative from corn
2. Eudragit L and S are soluble in intestinal fluid at pH 6 and pH 7

Options :

1. ✓ Both 1 and 2 are correct
2. ✗ Only 1 is correct
3. ✗ Only 2 is correct
4. ✗ Both 1 and 2 are incorrect

Question Number : 60 Question Id : 7520767500 Question Type : MCQ
Correct Marks : 1 Wrong Marks : 0

Which of the following is the recommended storage condition for cyanocobalamin injection USP?

Options :

1. ✗ Ambient storage
2. ✗ Cool place

3. ✘ Controlled cold temperature
4. ✔ Controlled room temperature

Question Number : 61 Question Id : 7520767501 Question Type : MCQ

Correct Marks : 1 Wrong Marks : 0

Which of the following methods of sterilization should be chosen for sterilization of disposable plastic syringes?

Options :

1. ✘ Autoclaving
2. ✘ Dry heat sterilization
3. ✔ Ethylene oxide sterilization
4. ✘ Ultraviolet light sterilization

Question Number : 62 Question Id : 7520767502 Question Type : MCQ

Correct Marks : 1 Wrong Marks : 0

Which of the following is the least preferred propellant in aerosols due to its highest ozone depleting effect?

Options :

1. ✘ Butane
2. ✔ Freon
3. ✘ Propane
4. ✘ Tetrafluoropropene

Question Number : 63 Question Id : 7520767503 Question Type : MCQ

Correct Marks : 1 Wrong Marks : 0

A researcher wants to improve the spreadability of a cleansing cream product.

Which of the following ingredients should be added?

Options :

1. ✓ Isopropyl myristate
2. ✗ Ozokerite
3. ✗ Stearic acid
4. ✗ Xanthan gum

Question Number : 64 Question Id : 7520767504 Question Type : MCQ

Correct Marks : 1 Wrong Marks : 0

A cosmetologist is preparing a mouth wash. What should be added to ensure hydration of dry mouth?

Options :

1. ✗ Carbopol
2. ✗ Carboxy methyl cellulose
3. ✗ Triclosan
4. ✓ Xylitol

Question Number : 65 Question Id : 7520767505 Question Type : MCQ

Correct Marks : 1 Wrong Marks : 0

A drug with pK_a value of 4.7 is more likely to be less ionized and more absorbed from:

Options :

1. ✓ Stomach
2. ✗ Small Intestine
3. ✗ Large Intestine
4. ✗ Oesophagus

**Question Number : 66 Question Id : 7520767506 Question Type : MCQ
Correct Marks : 1 Wrong Marks : 0**

Which of the following is applicable to Wagner Nelson method?

Options :

1. ✗ It applies to drugs showing absorption by saturable kinetics
2. ✓ It applies to orally administered drugs following a one-compartment model
3. ✗ It provides absorption rate constant for drugs following multi-compartment model
4. ✗ It characterizes drug absorption kinetics following non-oral administration

**Question Number : 67 Question Id : 7520767507 Question Type : MCQ
Correct Marks : 1 Wrong Marks : 0**

Which of the following statements is NOT TRUE for Flip-flop phenomenon?

Options :

1. ✓

Absorption rate constant is significantly higher than the elimination rate constant

2. ✘ Apparent elimination rate is influenced more by the absorption process than by the actual elimination process

3. ✘ Drugs exhibiting flip-flop kinetics may show prolonged effects due to slower absorption

4. ✘ Terminal slope of the plasma concentration-time curve reflects the elimination rate

Question Number : 68 Question Id : 7520767508 Question Type : MCQ

Correct Marks : 1 Wrong Marks : 0

In non-compartmental analysis, which statement DOES NOT APPLY to Area under the first moment curve [AUMC]?

Options :

1. ✘ It is the area under the plot of the product of concentration and time vs. time

2. ✘ It is used to calculate the mean residence time (MRT) of the drug

3. ✔ It is used to calculate the bioavailability and clearance rate

4. ✘ It is sensitive to the terminal phase of drug elimination

Question Number : 69 Question Id : 7520767509 Question Type : MCQ

Correct Marks : 1 Wrong Marks : 0

The excretion rate constant can be determined from

Options :

1. ✘ Salivary secretion studies
2. ✘ Plasma drug concentrations
3. ✔ Urinary sample analysis
4. ✘ Lung expiration studies

Question Number : 70 Question Id : 7520767510 Question Type : MCQ
Correct Marks : 1 Wrong Marks : 0

The unit of zero order elimination rate constant is:

Options :

1. ✔ mg/ml*hour
2. ✘ 1/hour
3. ✘ mg/hour
4. ✘ 1/ml*hour

Question Number : 71 Question Id : 7520767511 Question Type : MCQ
Correct Marks : 1 Wrong Marks : 0

Chapter _____ of the Pharmacy Act, 1948 deals with State Pharmacy Council.

Options :

1. ✘ I
2. ✘ II

3. ✓ III

4. ✗ IV

Question Number : 72 Question Id : 7520767512 Question Type : MCQ
Correct Marks : 1 Wrong Marks : 0

The First Schedule to the Drugs and Cosmetic Act, 1940 prescribes:

Options :

1. ✗ Standards for cosmetics

2. ✗ Standards for medical devices

3. ✓ Authoritative books of Ayurvedic, Sidha and Unani systems

4. ✗ Standards for drugs

Question Number : 73 Question Id : 7520767513 Question Type : MCQ
Correct Marks : 1 Wrong Marks : 0

Which of the following description defines a misbranded drug?

Options :

1. ✗ If it has been substituted wholly or in part by another drug or substances

2. ✓ If it is not labelled in the prescribed manner

3. ✗ If it purports to be the product of a manufacturer of whom it is not truly a product

4. ✗ If it is has been prepared, packed or stored under insanitary conditions where it may be rendered injurious to health

Question Number : 74 Question Id : 7520767514 Question Type : MCQ

Correct Marks : 1 Wrong Marks : 0

How many maximum members can be there in the Narcotic Drugs and Psychotropic Substances Committee formed under the provisions of the Narcotic Drugs and Psychotropic Substances Act and Rules?

Options :

1. ✘ 8
2. ✘ 10
3. ✘ 15
4. ✔ 20

Question Number : 75 Question Id : 7520767515 Question Type : MCQ

Correct Marks : 1 Wrong Marks : 0

Identify the correct pair

Options :

1. ✔ Essential Commodities Act + DPCO
2. ✘ NPPA + CDSCO
3. ✘ NPPA + August 2007
4. ✘ CDSCO + Ministry of Chemicals and Fertilizers

Question Number : 76 Question Id : 7520767516 Question Type : MCQ

Correct Marks : 1 Wrong Marks : 0

Which of the following words fulfils the definition of therapeutic index?

“The therapeutic index is a quantitative measure of a drug’s _____”.

Options :

1. ✘ Efficacy
2. ✔ Safety
3. ✘ Toxicity
4. ✘ Therapeutic value

Question Number : 77 Question Id : 7520767517 Question Type : MCQ

Correct Marks : 1 Wrong Marks : 0

Lithium is used for the treatment of _____.

Options :

1. ✘ convulsions
2. ✔ bipolar disorder
3. ✘ parkinson disease
4. ✘ alzheimer’s disease

Question Number : 78 Question Id : 7520767518 Question Type : MCQ

Correct Marks : 1 Wrong Marks : 0

Which of the following drugs is NOT used in the treatment of Alzheimer's disease?

Options :

1. ✘ Aducanumab

2. ✓ Carbamazepine

3. ✗ Donepezil

4. ✗ Galantamine

Question Number : 79 Question Id : 7520767519 Question Type : MCQ

Correct Marks : 1 Wrong Marks : 0

If a patient is suffering from severe fluid accumulation in the body due to kidney dysfunction, the drug used to treat this condition is ____.

Options :

1. ✗ amlodipine

2. ✗ vasopressin

3. ✓ spironolactone

4. ✗ glimepiride

Question Number : 80 Question Id : 7520767520 Question Type : MCQ

Correct Marks : 1 Wrong Marks : 0

Which of the following antiepileptic drugs is contraindicated for absence seizures in children?

Options :

1. ✗ Ethosuximide

2. ✗ Lamotrigine

3. ✓ Phenytoin

4. ✘ Valproic acid

Question Number : 81 Question Id : 7520767521 Question Type : MCQ
Correct Marks : 1 Wrong Marks : 0

Drug interaction with grapefruit juice involves _____.

Options :

1. ✔ CYP450 inhibition

2. ✘ renal excretion

3. ✘ increased metabolism

4. ✘ enzyme induction

Question Number : 82 Question Id : 7520767522 Question Type : MCQ
Correct Marks : 1 Wrong Marks : 0

Proton pump inhibitors act by inhibiting:

Options :

1. ✔ H^+ / K^+ ATPase enzyme

2. ✘ H^+ / Na^+ pump

3. ✘ H^+ / K^+ pump

4. ✘ $H^+ /$ ATPase enzyme

Question Number : 83 Question Id : 7520767523 Question Type : MCQ
Correct Marks : 1 Wrong Marks : 0

Antidote for paracetamol poisoning is _____.

Options :

1. ✓ N-acetylcysteine
2. ✗ naloxone
3. ✗ atropine
4. ✗ protamine

Question Number : 84 Question Id : 7520767524 Question Type : MCQ

Correct Marks : 1 Wrong Marks : 0

Which of the following is not an aminoglycoside?

Options :

1. ✗ Gentamycin
2. ✗ Streptomycin
3. ✗ Kanamycin
4. ✓ Azithromycin

Question Number : 85 Question Id : 7520767525 Question Type : MCQ

Correct Marks : 1 Wrong Marks : 0

_____ is NOT a serious side effect of long-term corticosteroid therapy.

Options :

1. ✗ Cushing's syndrome
2. ✗ Dyslipidaemia

3. ✓ Immune-stimulation

4. ✘ Osteoporosis

Question Number : 86 Question Id : 7520767526 Question Type : MCQ

Correct Marks : 1 Wrong Marks : 0

Metoclopramide produces its pharmacological effects through _____.

Options :

1. ✘ 5-HT agonist

2. ✓ dopamine D₂ antagonist

3. ✘ H₁ antagonist

4. ✘ muscarinic antagonist

Question Number : 87 Question Id : 7520767527 Question Type : MCQ

Correct Marks : 1 Wrong Marks : 0

Which of the following is a recently preferred combination of drugs for the treatment of patients suffering from Hepatitis C.?

Options :

1. ✘ Interferon and ribavirin

2. ✘ Interferon and zidovudine

3. ✓ Glecaprevir and pibrentasvir

4. ✘ Sofosbuvir and Stavudine

Question Number : 88 Question Id : 7520767528 Question Type : MCQ

Correct Marks : 1 Wrong Marks : 0

In a 3-point bioassay, the main purpose is to:

Options :

1. ✘ Determine LD_{50}
2. ✔ Compare potency of test and standard drug
3. ✘ Determine ED_{50}
4. ✘ Measure toxicity

Question Number : 89 Question Id : 7520767529 Question Type : MCQ

Correct Marks : 1 Wrong Marks : 0

Antithyroid drug inhibiting hormone synthesis is _____.

Options :

1. ✘ propranolol
2. ✔ methimazole
3. ✘ levothyroxine
4. ✘ iodothyronine

Question Number : 90 Question Id : 7520767530 Question Type : MCQ

Correct Marks : 1 Wrong Marks : 0

The full form of CAR T- cell therapy used in cancer treatment is:

Options :

1. ✘ Cancer antibody release Targeted – cell therapy

2. ✘ Cancer antigen receptor Targeted – cell therapy
3. ✔ Chimeric antigen receptor T- cell therapy
4. ✘ Chimeric antibody release T- cell therapy

Question Number : 91 Question Id : 7520767531 Question Type : MCQ

Correct Marks : 1 Wrong Marks : 0

Which of the following is/are not true about Parkinson's disease?

- A. Parkinson's disease is caused by the degeneration of the substantia nigra in the midbrain.
- B. Parkinson's disease is caused by the degenerative loss of nigrostriatal dopaminergic neurons.
- C. Bradykinesia, rigidity and tremor are the main symptoms in Parkinson's disease.
- D. Parkinson's disease is caused by the degenerative loss of nigrostriatal cholinergic neurons.

Choose the correct answer from the options given below:

Options :

1. ✘ A, B and D only
2. ✘ A, B and C only
3. ✘ C only
4. ✔ D only

Question Number : 92 Question Id : 7520767532 Question Type : MCQ

Correct Marks : 1 Wrong Marks : 0

Which of the following is essential for DNA synthesis in RBC maturation?

Options :

1. ✘ Iron
2. ✔ Vitamin B12
3. ✘ Vitamin C
4. ✘ Calcium

Question Number : 93 Question Id : 7520767533 Question Type : MCQ

Correct Marks : 1 Wrong Marks : 0

Which of the following prostaglandin is used in the treatment of pulmonary arterial hypertension?

Options :

1. ✘ Thromboxane A2
2. ✔ Prostacyclin
3. ✘ Misoprostol
4. ✘ Fasudil

Question Number : 94 Question Id : 7520767534 Question Type : MCQ

Correct Marks : 1 Wrong Marks : 0

Organophosphate poisoning typically presents with _____.

Options :

1. ✘ dry mouth

2. ✘ mydriasis
3. ✔ bronchospasm
4. ✘ tachycardia

Question Number : 95 Question Id : 7520767535 Question Type : MCQ

Correct Marks : 1 Wrong Marks : 0

Which drug is commonly used as an emergency oral contraceptive?

Options :

1. ✘ Ethinyl estradiol
2. ✘ Oxytocin
3. ✘ Progesterone
4. ✔ Levonorgestrel

Question Number : 96 Question Id : 7520767536 Question Type : MCQ

Correct Marks : 1 Wrong Marks : 0

A Quality Assurance manager conducts tests to determine the ability of a developed analytical method to accurately detect and respond to changes in various parameters. The tested parameter is called as _____.

Options :

1. ✘ accuracy
2. ✘ precision
3. ✔ sensitivity

4. ✘ specificity

Question Number : 97 Question Id : 7520767537 Question Type : MCQ

Correct Marks : 1 Wrong Marks : 0

An indicator changes colour over pH 3 to 4 is suitable for _____ titration.

Options :

1. ✘ strong acid–strong base

2. ✘ weak acid–strong base

3. ✘ strong base–weak acid

4. ✔ weak base–strong acid

Question Number : 98 Question Id : 7520767538 Question Type : MCQ

Correct Marks : 1 Wrong Marks : 0

Which of the following is NOT used as primary standard for acid-base titration in volumetric analysis?

Options :

1. ✘ Anhydrous sodium carbonate

2. ✘ Potassium dichromate

3. ✔ Potassium permanganate

4. ✘ Sodium oxalate

Question Number : 99 Question Id : 7520767539 Question Type : MCQ

Correct Marks : 1 Wrong Marks : 0

Equivalent weight of KMnO_4 in acidic medium is _____.

Options :

1. ✘ molecular weight of $\text{KMnO}_4/1$
2. ✘ molecular weight of $\text{KMnO}_4/2$
3. ✘ molecular weight of $\text{KMnO}_4/3$
4. ✔ molecular weight of $\text{KMnO}_4/5$

Question Number : 100 Question Id : 7520767540 Question Type : MCQ

Correct Marks : 1 Wrong Marks : 0

In $A = A_{1\%}^{1\text{cm}} \cdot b \cdot c$ $A_{1\%}^{1\text{cm}}$ is defined as _____.

Options :

1. ✘ Absorbance of a 1 mol/L solution in a 1 cm path length cell
2. ✘ Absorbance of a 0.1% w/v solution in a cell of 1 cm path length
3. ✘ Absorbance of a 1% w/v solution in a cell of 10 cm path length
4. ✔ Absorbance of a 1% w/v solution in a cell of 1 cm path length

Question Number : 101 Question Id : 7520767541 Question Type : MCQ

Correct Marks : 1 Wrong Marks : 0

20 gm NaOH in 500 ml =

Options :

1. ✘ 0.1 N
2. ✔ 1 N

3. ✘ 0.5 M

4. ✘ 0.05 N

**Question Number : 102 Question Id : 7520767542 Question Type : MCQ
Correct Marks : 1 Wrong Marks : 0**

Which of the following bonds will show the strongest absorption in their IR spectra?

Options :

1. ✘ Carbon-hydrogen

2. ✔ Oxygen-hydrogen

3. ✘ Nitrogen-hydrogen

4. ✘ Sulfur-hydrogen

**Question Number : 103 Question Id : 7520767543 Question Type : MCQ
Correct Marks : 1 Wrong Marks : 0**

In polarography, when limiting current is achieved, which of the following processes takes place?

Options :

1. ✘ The rate of electron transfer just matches the rate of mass transfer

2. ✘ The rate of electron transfer is slower than the rate of mass transfer

3. ✘ The rate of electron transfer becomes independent of the rate of mass transfer

4. ✔

The rate of electron transfer far exceeds the rate of mass transfer

Question Number : 104 Question Id : 7520767544 Question Type : MCQ

Correct Marks : 1 Wrong Marks : 0

Back diffusion occurs mostly in _____.

Options :

1. ✘ Size exclusion chromatography
2. ✘ HPLC
3. ✔ Gas chromatography
4. ✘ HPTLC

Question Number : 105 Question Id : 7520767545 Question Type : MCQ

Correct Marks : 1 Wrong Marks : 0

_____ chromatography is the correct technique for separation of two analytes with similar chemical nature.

Options :

1. ✔ Partition
2. ✘ Adsorption
3. ✘ Chiral
4. ✘ Ion pair

Question Number : 106 Question Id : 7520767546 Question Type : MCQ

Correct Marks : 1 Wrong Marks : 0

Which of the following components does NOT form a part of monochromator in spectroscopy?

Options :

1. ✓ Beam splitter
2. ✗ Collimating mirror
3. ✗ Diffracting grating
4. ✗ Prism

**Question Number : 107 Question Id : 7520767547 Question Type : MCQ
Correct Marks : 1 Wrong Marks : 0**

_____ gas is NOT suitable in gas chromatography?

Options :

1. ✗ Argon
2. ✗ Hydrogen
3. ✓ Methane
4. ✗ Nitrogen

**Question Number : 108 Question Id : 7520767548 Question Type : MCQ
Correct Marks : 1 Wrong Marks : 0**

Bathochromic shift depends on

Options :

1. ✗ isolated double bonds

2. ✓ conjugated double bond
3. ✗ thermal conductivity
4. ✗ absorption of light

Question Number : 109 Question Id : 7520767549 Question Type : MCQ
Correct Marks : 1 Wrong Marks : 0

Flame photometry is mainly used for estimation of _____.

Options :

1. ✓ Alkali and alkaline earth metals
2. ✗ Transition metals
3. ✗ Halogens
4. ✗ Organic compounds

Question Number : 110 Question Id : 7520767550 Question Type : MCQ
Correct Marks : 1 Wrong Marks : 0

Identify the correct statement with respect to gel permeation chromatography:

Options :

1. ✓ Separation is based on the difference in size
2. ✗ Smaller molecules are eluted faster than larger ones
3. ✗ Stationary phase in GPC is a column filled with gel made of cellulose or silica
4. ✗

It is widely used for the separation of small, low molecular weight, compounds

Question Number : 111 Question Id : 7520767551 Question Type : MCQ

Correct Marks : 1 Wrong Marks : 0

Non-aqueous titrations are mainly used for determination of _____.

Options :

1. ✘ strong acids
2. ✘ strong bases
3. ✔ weakly acidic or basic compounds
4. ✘ neutral substances

Question Number : 112 Question Id : 7520767552 Question Type : MCQ

Correct Marks : 1 Wrong Marks : 0

Which error can be minimized by increasing the number of observations?

Options :

1. ✘ Systematic error
2. ✔ Random error
3. ✘ Method error
4. ✘ Personal error

Question Number : 113 Question Id : 7520767553 Question Type : MCQ

Correct Marks : 1 Wrong Marks : 0

The Q3C ICH guidelines are related to:

Options :

1. ✘ Impurities in new drug products
2. ✘ Impurities in new drug substances
3. ✘ Elemental impurities
4. ✔ Residual solvents

**Question Number : 114 Question Id : 7520767554 Question Type : MCQ
Correct Marks : 1 Wrong Marks : 0**

Which of the following is used as indicator electrode in acid-base titration?

Options :

1. ✘ Calomel electrode
2. ✘ Platinum electrode
3. ✘ Silver electrode
4. ✔ Glass electrode

**Question Number : 115 Question Id : 7520767555 Question Type : MCQ
Correct Marks : 1 Wrong Marks : 0**

Which of the following is NOT an advantage of paper chromatography?

Options :

1. ✔ Can separate ionic and polar compounds
2. ✘ High separation efficiency for large molecules
3. ✘ Low cost and simplicity

4. ✘ Requires only small sample volumes

**Question Number : 116 Question Id : 7520767556 Question Type : MCQ
Correct Marks : 1 Wrong Marks : 0**

Which functional group shows very strong absorption band in IR spectroscopy?

Options :

1. ✘ C-H

2. ✘ C-C

3. ✔ C=O

4. ✘ C=C

**Question Number : 117 Question Id : 7520767557 Question Type : MCQ
Correct Marks : 1 Wrong Marks : 0**

What is the range of the energy required to produce ions in mass spectrometry through electron ionization?

Options :

1. ✘ 1 eV to 5 eV

2. ✘ 5 eV to 10 eV

3. ✔ 10 eV to 100 eV

4. ✘ 100 eV to 200 eV

Question Number : 118 Question Id : 7520767558 Question Type : MCQ

Correct Marks : 1 Wrong Marks : 0

What is the correct order of elution in column chromatography using silica gel as the stationary phase and a non-polar solvent?

Options :

1. ✘ Amines > non-polar compounds > saturated hydrocarbons > esters
2. ✘ Esters > amines > non-polar compounds > saturated hydrocarbons
3. ✔ Non-polar compounds > saturated hydrocarbons > esters > amines
4. ✘ Saturated hydrocarbons > esters > amines > non-polar compounds

Question Number : 119 Question Id : 7520767559 Question Type : MCQ

Correct Marks : 1 Wrong Marks : 0

Identify the false statement with respect to McLafferty rearrangement in mass spectroscopy.

Options :

1. ✘ It is a fragmentation reaction
2. ✘ A six-membered cyclic transition state is involved
3. ✔ It occurs in any compound that has a hydrogen atom on the γ -carbon
4. ✘ A radical cation and a neutral alkene fragments are formed

Question Number : 120 Question Id : 7520767560 Question Type : MCQ

Correct Marks : 1 Wrong Marks : 0

ALCOA principle stands for:

Options :

1. ✘ Accurate, Logical, Complete, Organized, Available
2. ✔ Attributable, Legible, Contemporaneous, Original, Accurate
3. ✘ Analytical, Logical, Certified, Original, Approved
4. ✘ Attributable, Legible, Complete, Organized, Accurate